

hydrapulse®

Smart Pump

Mobile High & Low Voltage 1.5kW, 2.5kW, 10kW, 30kW

The Hydrapulse Smart Pump is a ruggedized electro-hydraulic pump unit with integrated motor, controller and closed-loop feedback that is specifically designed to take mobile fluid power to the next level of integration, efficiency, and control. Our mobile series incorporates J1939 communications for simple integration into any vehicle platform.

MOBILE



FEATURES

- Proportional and directional control
- Closed-loop sensor feedback
- Integrated gear pump and check valves
- Integrated liquid cooling
- Industry 4.0/ IIOT ready
- Up to 70% more efficient than traditional HPUs
- 3 times smaller overall system size
- SAE type A pump mount
- SAE ORB #6 hydraulic ports
- CAN J1939 communication interface

APPLICATIONS

- Work trucks
- Boom and crane lifts
- Agricultural equipment
- Trailer HPU kits
- Electro-hydraulic actuators (EHA)
- Ancillary hydraulic systems

COMPLIANCE

- UL 845, 1741
- UL/IEC/EN 61800-5-1 Adjustable Speed Electrical Power Drives
- IEC/EN 61800-3 Electromagnetic Compatibility
- FCC Radiated Emissions
- SAE J1455

SPECS

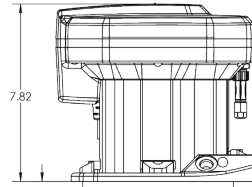
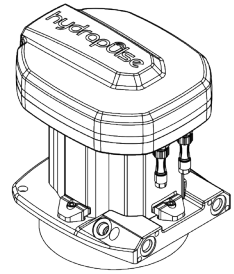
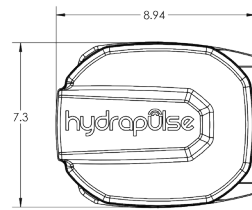
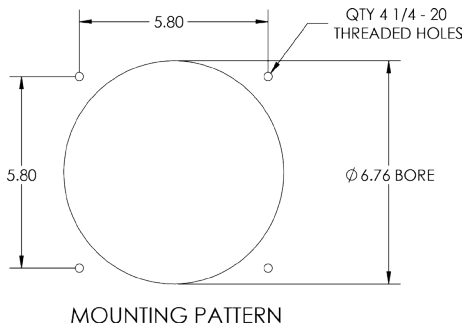
Hydrapulse	1.5kW 12vdc	1.5kW 24vdc	1.5kW 48vdc	2.5kW (3.3hp)	10kW (13.4hp)	30kW (40hp)
Part Number	HP-015-001	HP-015-001	HP-015-001	HP-025-650	HP-100-650	HP-300-650
Unit Weight	30 lbs	30 lbs	30 lbs	30 lbs	70 lbs	200 lbs
Housing Material	6061 Aluminum	6061 Aluminum	6061 Aluminum	6061 Aluminum	6061 Aluminum	6061 Aluminum
IP Rating	IP68	IP68	IP68	IP68	IP68	IP68
Electrical						
Voltage Input Range	9-15 vdc	18-30 vdc	40-60 vdc	200-700 vdc	200-700 vdc	200-700 vdc
Max Current Draw	125 a	63 a	32 a	3.8 a @650 vdc	17 a @650 vdc	55 a @650 vdc
Max Power Output	1.4kW (1.8hp)	1.4kW (1.8hp)	1.5kW (2.0hp)	2.45kW (3.28hp)@650 vdc	11kW(14.7hp)@650 vdc	35kW (47hp)@650 vdc
Comm Connector	Samtec IP68 sealed M12	Samtec IP68 sealed M12	Samtec IP68 sealed M12	Samtec IP68 sealed M12	Samtec IP68 sealed M12	Samtec IP68 sealed M12
Power Connector	Proprietary 12vdc connector	Proprietary 24vdc connector	Proprietary 48vdc connector	Amphenol Mini Magnamate Series	Amphenol EL Series	Amphenol Magnamate Series
Communication Protocol	CAN J1939	CAN J1939	CAN J1939	CAN J1939	CAN J1939	CAN J1939
Pump*						
Pump Mount	n/a	n/a	n/a	SAE Type A	SAE Type A	SAE Type B
Max Pump Speed	4,000 rpm*	4,000 rpm*	4,000 rpm*	4,000 rpm*	4,000 rpm*	4,000 rpm*
Max A and B Pressure	4,000 psi*	4,000 psi*	4,000 psi*	4,000 psi*	4,000 psi*	4,000 psi*
Max Flow Rate	0-4 gpm*	0-4 gpm*	0-4 gpm*	0-4 gpm*	0-10 gpm*	0-30 gpm*
Motor						
Continuous Stall Torque	3.17 ft-lb	3.17 ft-lb	3.17 ft-lb	5.0 ft-lb	24.2 ft-lb	105.4 ft-lb
Rated Torque	2.79 ft-lb	2.79 ft-lb	2.79 ft-lb	4.3 ft-lb	20.4 ft-lb	79.14 ft-lb
Max Speed	4,000 rpm	4,000 rpm	4,000 rpm	4,000 rpm	4,000 rpm	4,000 rpm

*Pump specifications are specific to each application. Contact Hydrapulse for more information.

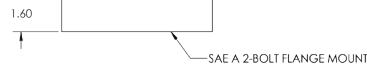
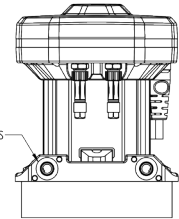
hydrapulse.com | info@hydrapulse.com | 916-245-9660

DRIVE SIDE DIMENSIONAL DRAWINGS

2.5kW

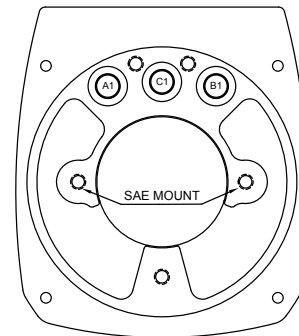
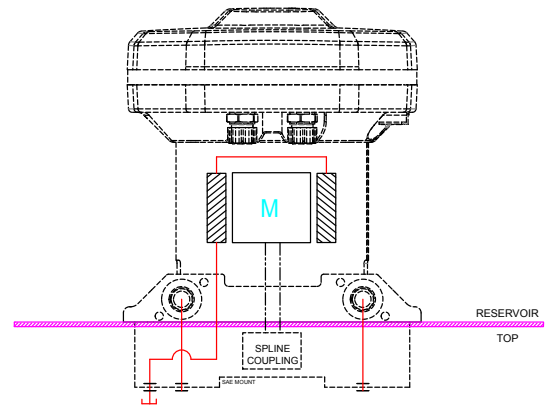
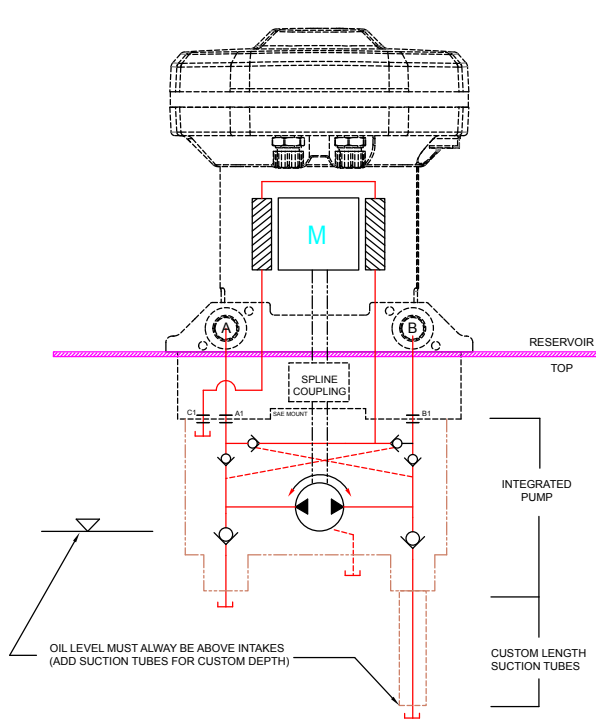


SAE ORB #6 PORTS



PUMP SIDE SCHEMATIC

2.5kW, 10kW, and 30kW sizes



WARNING!

FAILURE OR IMPROPER SELECTION OR IMPROPER USE OF THE PRODUCTS AND/OR SYSTEMS DESCRIBED HEREIN OR RELATED ITEMS CAN CAUSE DEATH, PERSONAL INJURY AND PROPERTY DAMAGE. This document and other information from Hydrapulse LLC, its subsidiaries and authorized distributors provide product and/or system options for further investigation by users having technical expertise. It is important that you analyze all aspects of your application, including consequences of any failure, and review the information concerning the product or system in the current product catalogue. Due to the variety of operating conditions and applications for these products or systems, the user, through its own analysis and testing, is solely responsible for making the final selection of the products and systems and assuring that all performance, safety and warning requirements of the application are met. The products described herein, including without limitation, product features, specifications, designs, availability and pricing, are subject to change by Hydrapulse LLC and its subsidiaries at any time without notice. This product can expose you to chemicals including lead, which is known to the State of California to cause cancer. For more information, go to www.P65Warnings.ca.gov.